



**acontis technologies GmbH**

**SOFTWARE**

# **EC-Simulator**

**Quick Start Guide**

**V3.3**

**AT3504**

**Edition: February 5, 2026**

EtherCAT® is registered trademark and patented technology, licensed by Beckhoff Automation GmbH, Germany.

© Copyright **acontis technologies GmbH**

Neither this document nor excerpts therefrom may be reproduced, transmitted, or conveyed to third parties by any means whatever without the express permission of the publisher. At the time of publication, the functions described in this document and those implemented in the corresponding hardware and/or software were carefully verified; nonetheless, for technical reasons, it cannot be guaranteed that no discrepancies exist. This document will be regularly examined so that corrections can be made in subsequent editions. Note: Although a product may include undocumented features, such features are not considered to be part of the product, and their functionality is therefore not subject to any form of support or guarantee.

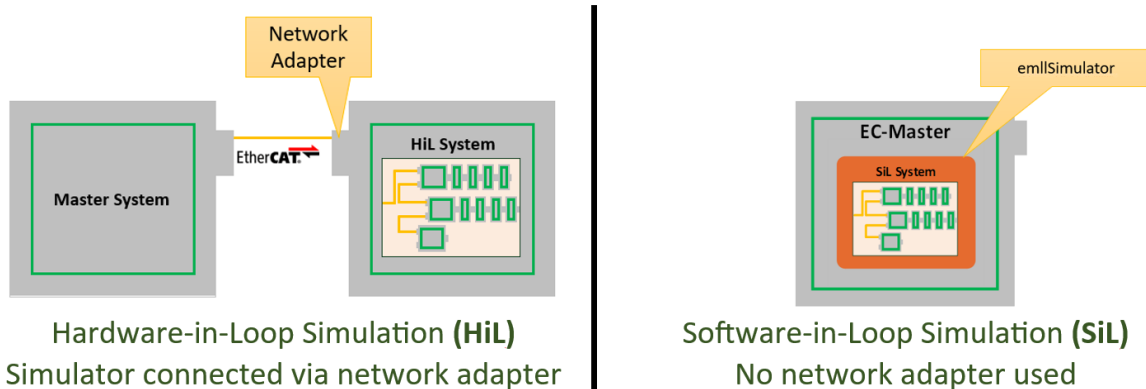
# Contents

<b>1</b>	<b>About</b>	<b>4</b>
<b>2</b>	<b>Get Your License Key</b>	<b>5</b>
<b>3</b>	<b>Install EC-Simulator HiL</b>	<b>6</b>
3.1	Prepare the EtherCAT® Simulator Network Adapter . . . . .	6
3.2	Prepare the Operating System (Windows) . . . . .	6
3.3	Prepare the Operating System (Linux) . . . . .	7
<b>4</b>	<b>EtherCAT® Network Configuration (ENI/EXI)</b>	<b>8</b>
4.1	Use an Existing EtherCAT® Network Configuration . . . . .	8
4.2	Configure a New EtherCAT® Network (Offline Configuration) . . . . .	8
4.3	Configure Motion (DS402) in EXI . . . . .	10
<b>5</b>	<b>Running EcSimulatorHiLDemo</b>	<b>12</b>
5.1	Setting up and running EcSimulatorHiLDemo (Windows) . . . . .	12
5.2	Setting up and running EcSimulatorHiLDemo (Linux) . . . . .	12
5.3	Online Diagnosis (EC-Engineer Diagnosis Mode) . . . . .	13
<b>6</b>	<b>Next Steps</b>	<b>15</b>

## 1 About

The EC-Simulator virtualizes EtherCAT® networks to run MainDevice systems without real SubDevices to test and develop EtherCAT® systems.

The EC-Simulator is available in two editions, HiL and SiL, depending on the connection between MainDevice and Simulator:



This Quick Start Guide is about EC-Simulator HiL. It briefly shows how to install and run the included example program. The EC-Simulator's User Manual contains information that is more detailed and is available at <https://developer.acontis.com/ec-simulator.html>.

The EC-Simulator can be obtained from <https://www.acontis.com/en/ecdownloads.html>.

If you have questions, please contact us at <https://www.acontis.com/en/contactform.html>.

## 2 Get Your License Key

A valid license key is needed to run EC-Simulator HiL, see chapter “*Protected version*” in the EC-Simulator HiL User Manual for how to obtain it.

It is possible to continue this Quick Start Guide without a valid license key with limited functionality.

The license key **must match the network adapter** used by EC-Simulator HiL!

### 3 Install EC-Simulator HiL

The EC-Simulator SDK including its examples is contained in the installation package named e.g. `EC-Simulator-HiL-V3.2.1.01-Windows-x86_64Bit-Eval.zip`.

The procedure is generally the same for all operating systems supported by the EC-Simulator.

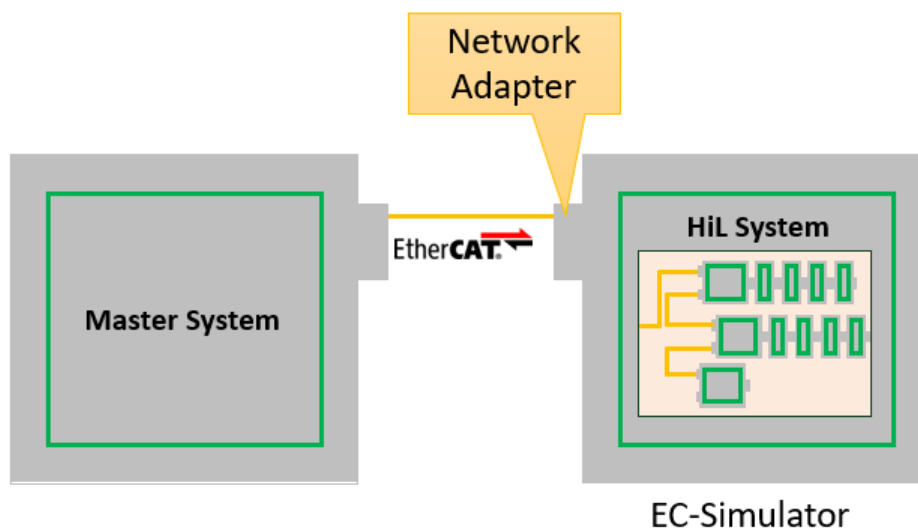
The installation of EC-Simulator for Windows contains the installer `setup.exe` guiding through the installation process.

For non-Windows operating systems, the files of the SDK to be extracted are directly contained within the installation package.

It is recommended to copy the files to a folder where the user has write access.

#### 3.1 Prepare the EtherCAT® Simulator Network Adapter

When running, the EC-Simulator HiL listens on a specific network adapter for EtherCAT® frames sent by the Main-Device, simulates the network and sends them back to the Main-Device:



**The Ethernet network adapter must be dedicated to be used by EC-Simulator HiL and may not be mixed with other network adapters, i.e. LAN infrastructure!**

It is recommended to add an Intel Gigabit PCIe NIC used for EC-Simulator to the EtherCAT® Simulator Network Adapter for this purpose.

#### 3.2 Prepare the Operating System (Windows)

The command “`ipconfig`” shows the IP settings of the installed network adapters, including the IP address of the dedicated Ethernet network adapter for EC-Simulator HiL e.g., “192.168.99.1”.

### 3.3 Prepare the Operating System (Linux)

EC-Simulator HiL supports different Ethernet adapter types.

It is recommended to use an Intel Pro/1000 handled by the `acontis emllIntelGbe` driver. Other network adapter types are supported too and described in the EC-Simulator HiL User Manual.

1. The `acontis atemsys` Linux Kernel driver must be downloaded and applied to the Linux system: See <https://github.com/acontis/atemsys>.
2. The commands “`lshw -short -c network`” and “`lspci | grep Ethernet`” show the hardware information of the installed network adapters, including the PCI bus address of the dedicated Ethernet network adapter for EC-Simulator HiL, e.g. “01:00.0” (bus 01, device 00, function 0 as needed below):

```
$ sudo bash
$ lshw -short -c network
$
$ H/W path          Device          Class           Description
$ =====
$ /0/100/1/0       enp1s0f0       network        I350 Gigabit Network Connection
$ /0/100/19        lan             network        Ethernet Connection I217-LM
$
$ lspci | grep Ethernet
$ 00:19.0 Ethernet controller: Intel Corporation Ethernet Connection I217-LM
$ 01:00.0 Ethernet controller: I350 Gigabit Network Connection
```

The PCI bus address is used to specify the network adapter used by `EcSimulatorHiLDemo` and is formatted as `0x01bbddf`:

- *bb* Bus Number
- *dd* Device Number
- *ff* Function Number

3. The dedicated network adapter to be used must be unbound from the Linux Kernel and `atemsys` loaded:

```
root@myLinuxTarget:~# echo "0000:01:00.0" > /sys/bus/pci/drivers/igb/unbind
root@myLinuxTarget:~# modprobe atemsys
```

Unbinding the network adapter instance from the Linux Kernel and loading the `atemsys` Kernel driver is non-persistent and **must be redone after reboot**.

## 4 EtherCAT® Network Configuration (ENI/EXI)

The EC-Simulator needs knowledge about the network to be simulated which must be configured using a configuration file in the EtherCAT® Network Information Format (ENI) or the Extended Network Information Format (EXI).

**It is strongly recommended to use the same configuration file at MainDevice and Simulator!**

The EtherCAT® Network can be configured using EC-Engineer, which can be obtained from <https://www.acontis.com/en/eccdownloads.html>.

The User Manuals of EC-Simulator and EC-Engineer contain information that is more detailed. They are available at <https://developer.acontis.com/manuals.html>.

If you have questions, please contact us at <https://www.acontis.com/en/contactform.html>.

### 4.1 Use an Existing EtherCAT® Network Configuration

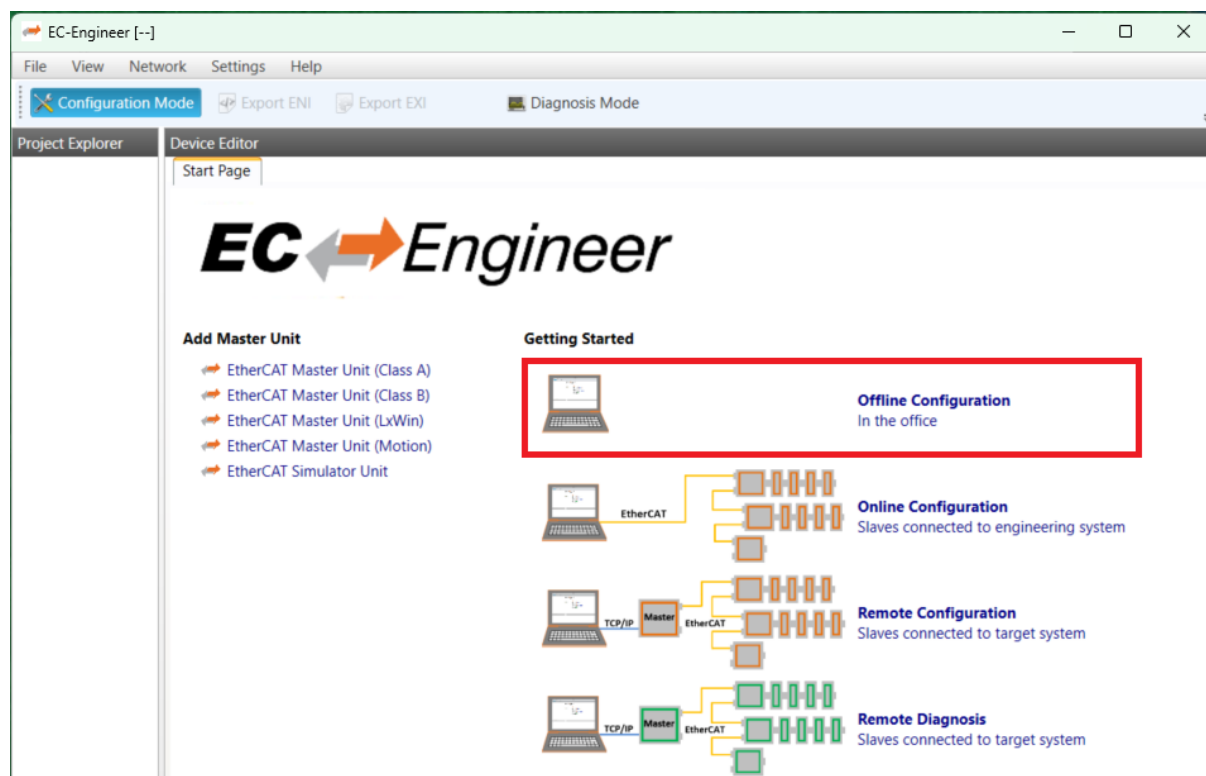
The configuration file is typically already available or can be exported from the configuration tool used to configure the EtherCAT® MainDevice.

In any other case, a new EtherCAT® Network must be configured, see below.

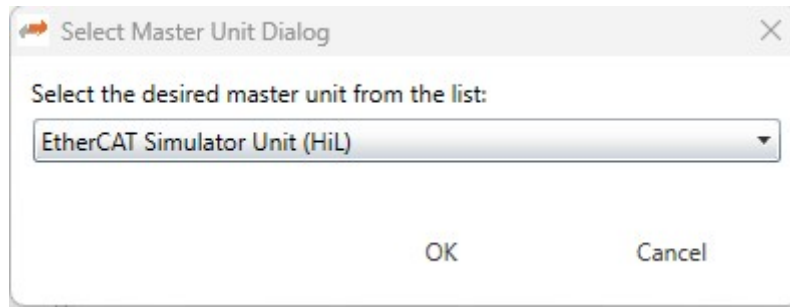
### 4.2 Configure a New EtherCAT® Network (Offline Configuration)

The new EtherCAT® Network to be simulated can be configured using EC-Engineer as described below.

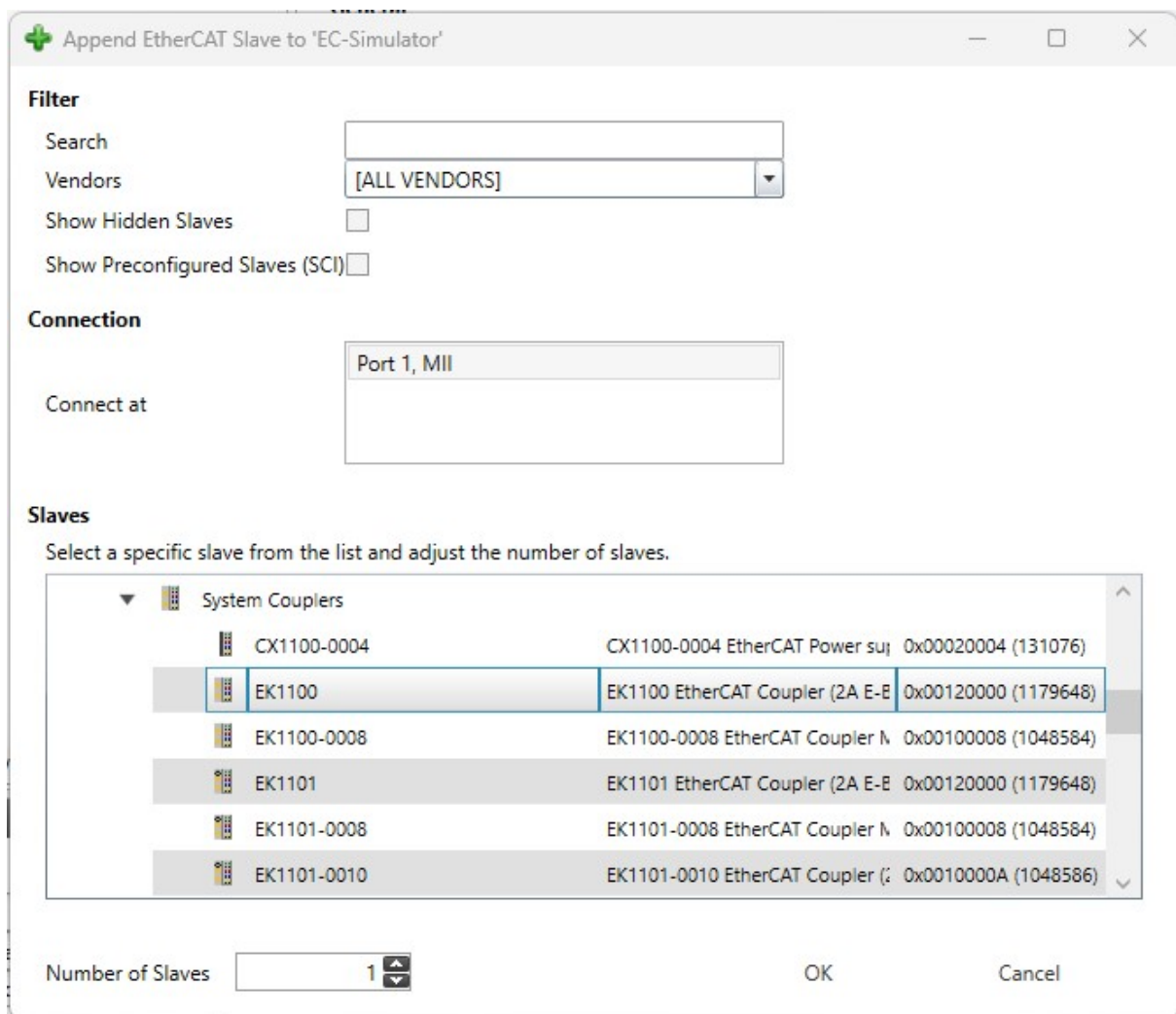
1. Start EC-Engineer. Select “*Offline Configuration*” within the “*Start Page*” tab:



2. In the following dialog, select “EtherCAT Simulator Unit (HiL)” and press “OK”:

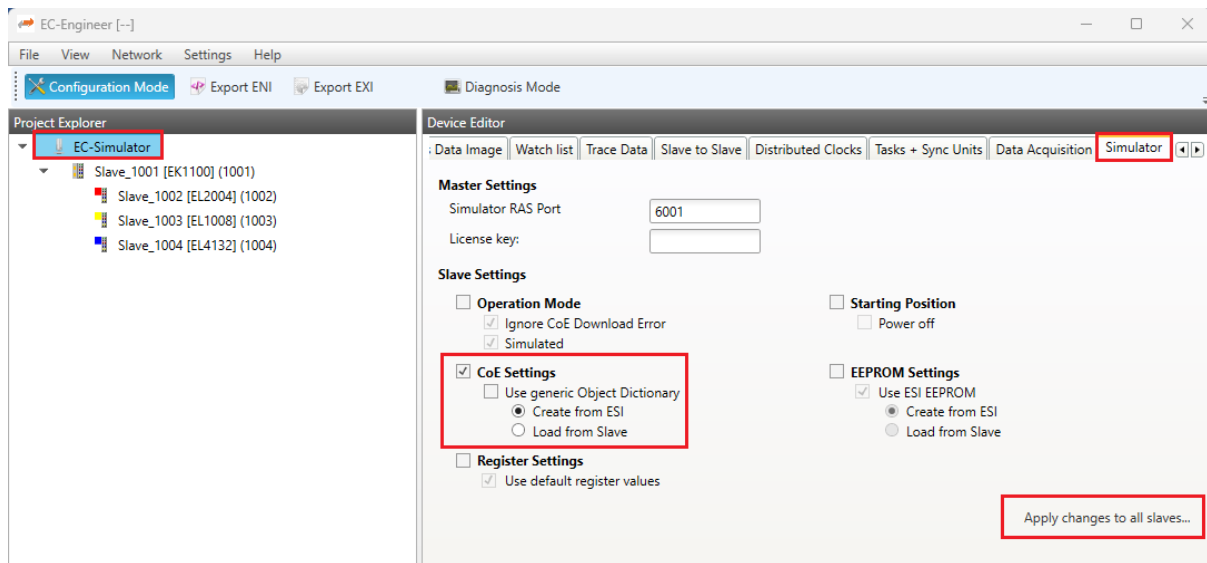


3. Append desired SubDevices e.g., EK1100 + EL2004 + EL1008 + EL4132 and press “OK”:

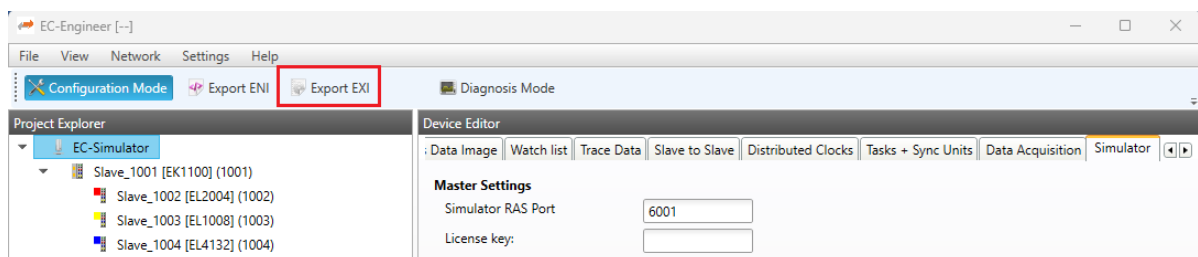


Hint: The EC-Engineer needs to know about all SubDevice types that are going to be configured. SubDevice descriptions (ESI files) can be added by “File > ESI Manager” from the menu bar.

4. Select Object Directories to be created from ESI files and click “Apply changes to all SubDevices...” (optional):



5. Finally click to “Export EXI” to store the configuration file e.g., “exi.xml”:

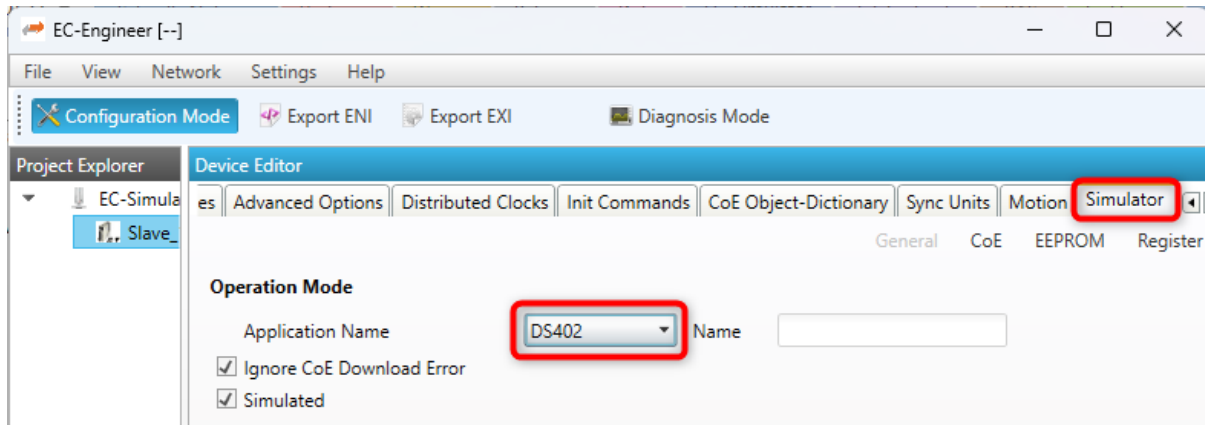


This configuration can now be loaded by the EcSimulatorHiLDemo.

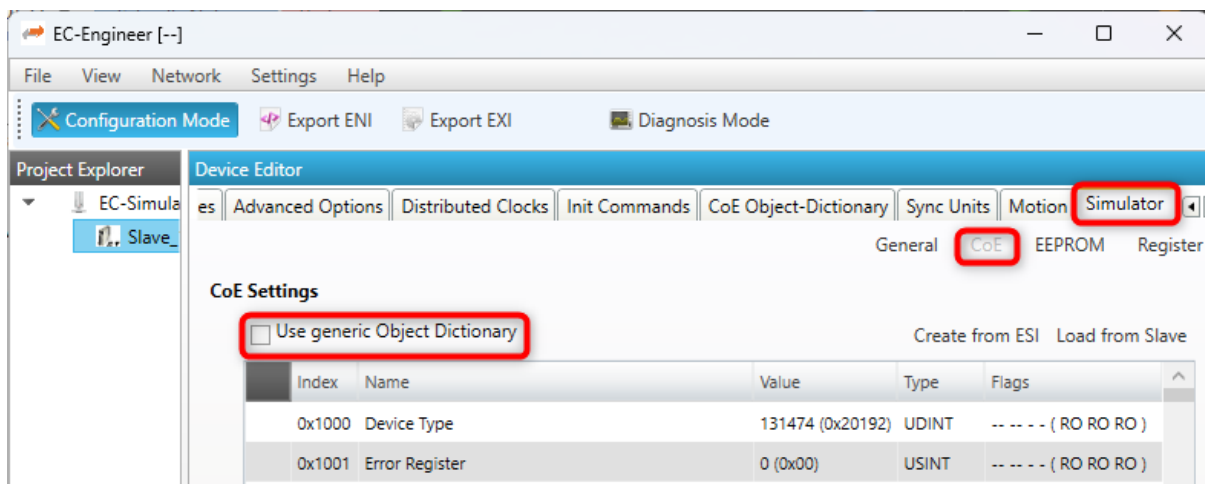
### 4.3 Configure Motion (DS402) in EXI

The EC-Simulator HiL includes an internal DS402 state machine simulation with actual position emulation. Axis movement is implemented by mapping Target position (0x607A) directly to Position actual value (0x6064) in CSP mode, and Target velocity (0x60FF) directly to Velocity actual value (0x606C) in CSV mode. This internal simulation can be enabled in the EXI file using the following steps in EC-Engineer:

1. Click on a SubDevice in the Project Explorer, then switch to the Tab “Simulator” in the Device Editor. In the combo box “Application Name” select “DS402”:

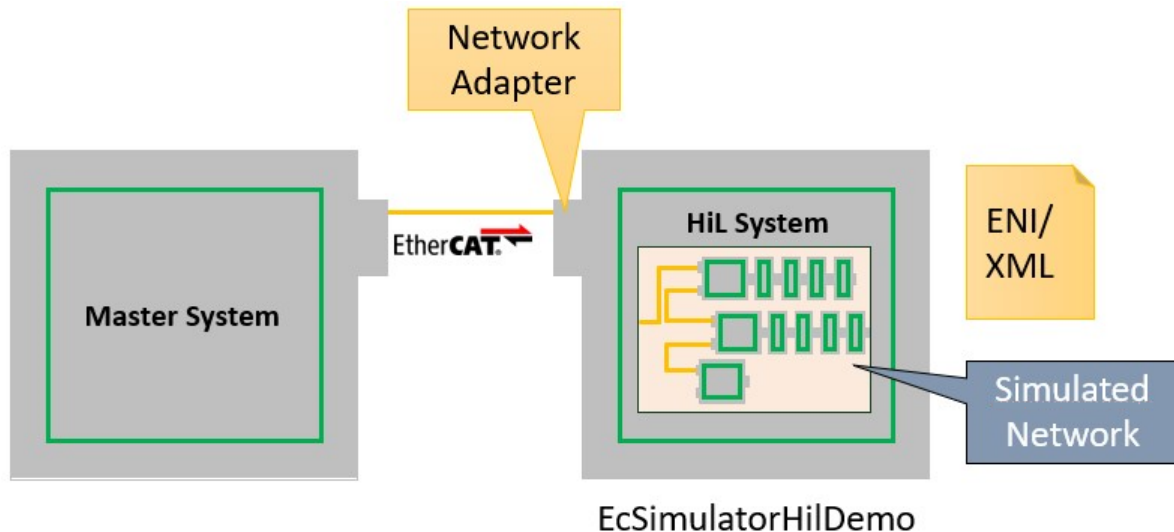


2. Optionally click on “CoE”, then make sure that the box “Use generic Object Dictionary” is unchecked:



## 5 Running EcSimulatorHilDemo

The `EcSimulatorHilDemo` is an EC-Simulator example application that initializes the EC-Simulator HiL to listen on a specific network adapter for EtherCAT® frames sent by the MainDevice, simulate the network and send them back to the MainDevice. At least the **network adapter** and the **configuration file** (ENI/EXI) for the network to be simulated must be known to run the `EcSimulatorHilDemo`:



While `EcSimulatorHilDemo` runs, the MainDevice System can scan and operate the simulated EtherCAT® network.

Most EtherCAT® systems require modifications to the HiL System if real-time constraints must be kept, else the MainDevice may fail switching to the EtherCAT® PREOP or SAFE-OP state.

The EC-Simulator HiL license key can be given to the `EcSimulatorHilDemo` as parameter “-lic ...”.

### 5.1 Setting up and running EcSimulatorHilDemo (Windows)

Copy all of the example application files into one directory, i.e. the application `EcSimulatorHilDemo.exe` and all DLLs from within `Bin\Windows\x64`, as well as the EtherCAT® network configuration file (ENI/EXI) EXI file.

The following command starts `EcSimulatorHilDemo`:

```
$ EcSimulatorHilDemo.exe -ndis 192.168.99.1 0 -f exi.xml -t 0 -v 3 -sp
```

### 5.2 Setting up and running EcSimulatorHilDemo (Linux)

The following command starts `EcSimulatorHilDemo` after preparing the system as described above:

```
.. prompt:: bash
```

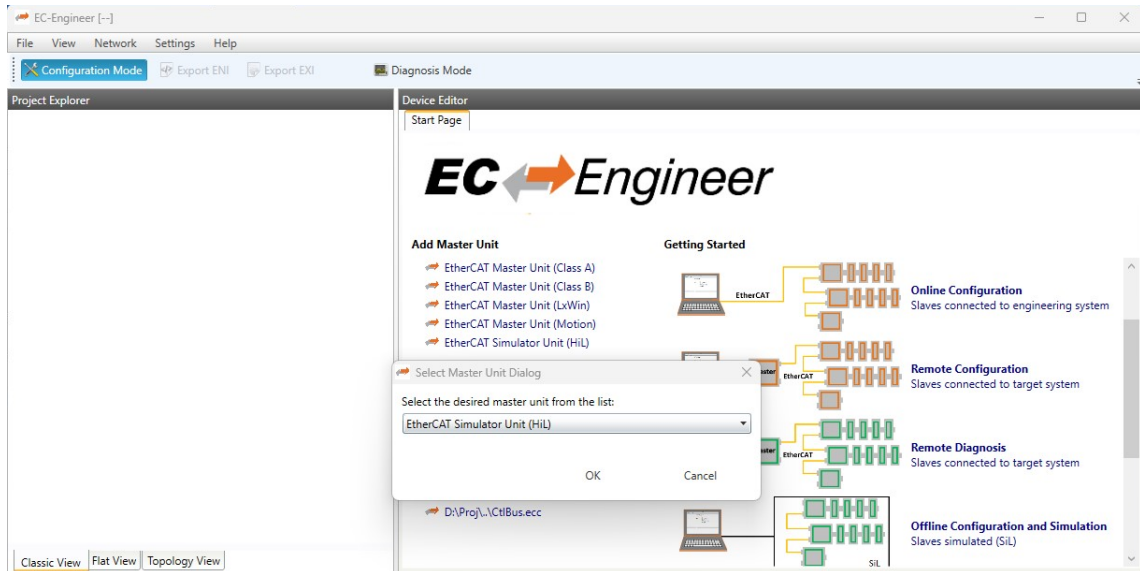
```
root@myLinuxTarget: # cd Bin/Linux/x64
```

```
... # export LD_LIBRARY_PATH=.
```

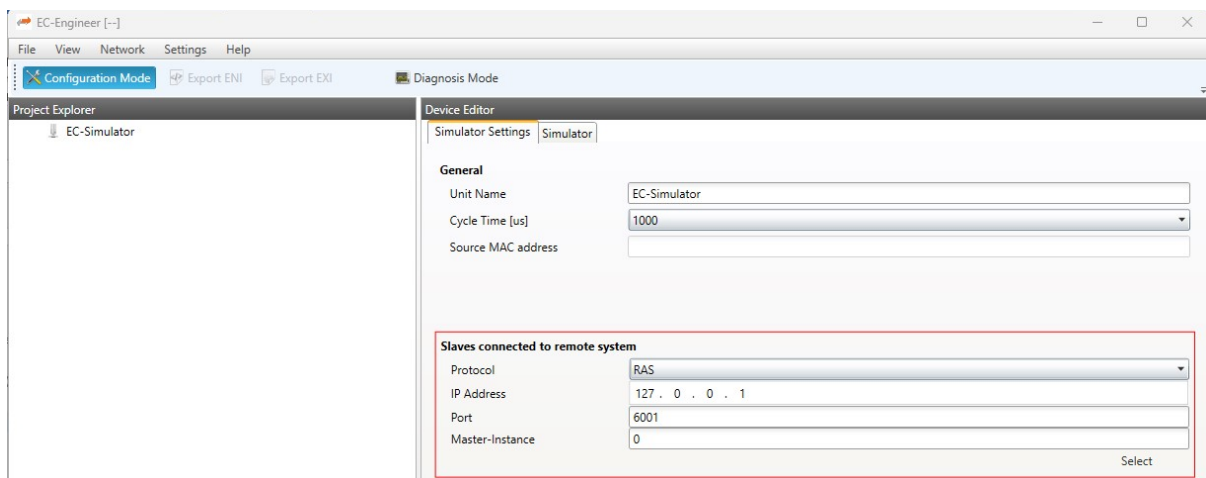
```
... # ./EcSimulatorHilDemo -f exi.xml -intelgbe 0x01010000 1 -t 0 -v 3 -sp
```

## 5.3 Online Diagnosis (EC-Engineer Diagnosis Mode)

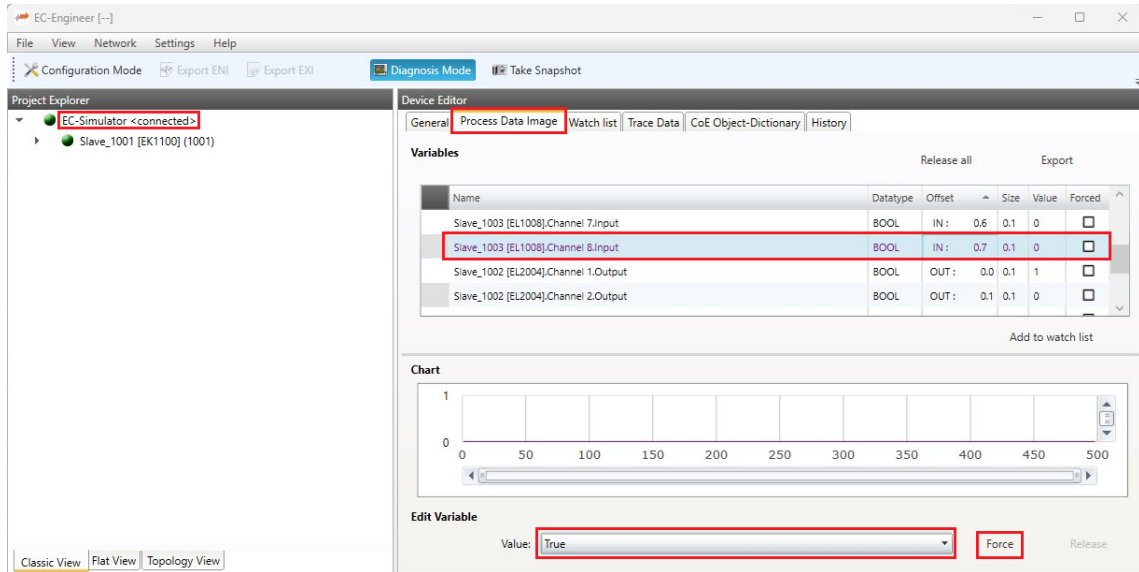
1. Start EC-Engineer. Enter “*Remote Diagnosis*” within the “*Start Page*” tab and select “EtherCAT Simulator Unit (HiL)”:



2. Enter the LAN IP address of the system running the EcSimulatorHiLDemo and press “Select”



- Process Data OUTPUTs from the MainDevice can be inspected and Process Data INPUTs to the MainDevice can be forced at the “Process Data Image” tab of the EC-Simulator Network Adapter:



## 6 Next Steps

The EC-Simulator's User Manual is located in the "Doc" folder of the SDK installation and available online at <https://developer.acontis.com/manuals.html> .

It contains information that is more detailed and helps with the next steps i.e.:

- Check-out the "-flash" parameter of EcSimulatorHiLDemo and inspect the values in EC-Engineer as an example for setting Process Data INPUTs programmatically
- Learn about EC-Simulator's features
- Learn using the API: See "EC-Simulator Software Development Kit (SDK)" in the User Manual

Define your application:

- Check what is required by the EtherCAT® MainDevice application
- Create the system design of EtherCAT® MainDevice and EtherCAT® Simulator
- Define your use cases of EC-Simulator's and design your own EC-Simulator's application
- Create the EtherCAT® Network Configurations for your Use Cases
- Implement your own EC-Simulator's application in C / C++ / Python / .NET

If you have questions, please contact us at <https://www.acontis.com/en/contactform.html> .